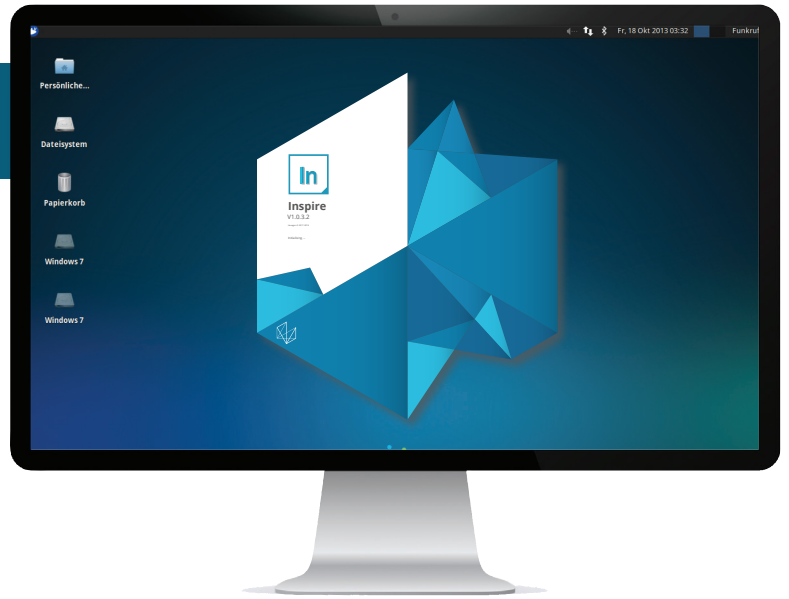


Introducing

Inspire

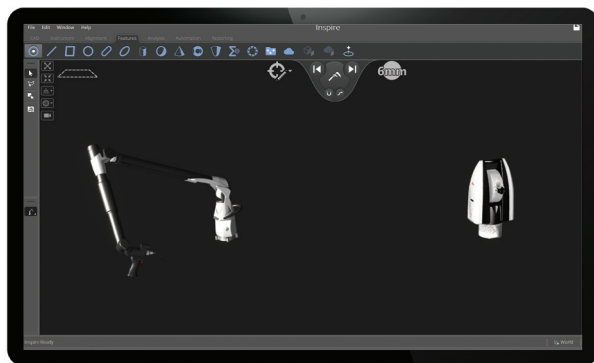
Inspection software for portable probing and scanning devices



Delivering an easy-to-use, comprehensive solution that makes measurement simple and the complex possible

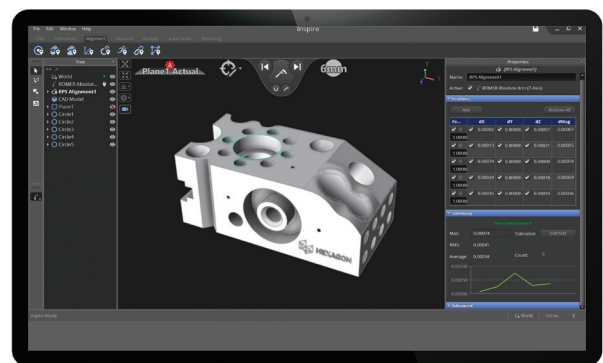
Measuring

Use any portable arm and laser tracker for probing and scanning applications with one simple interface. Adaptive measurement modes reduce the amount of software interaction so that you can spend more time measuring and less time navigating through software.



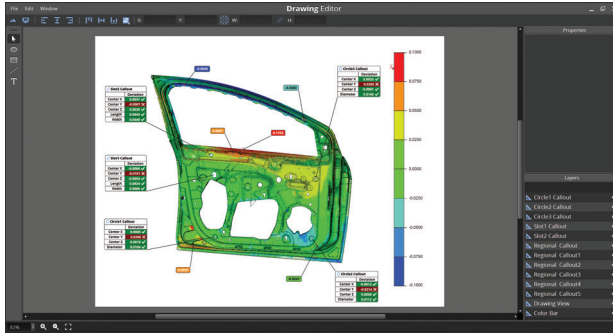
Aligning

This software allows for traditional datum-based alignments, feature-based, best fit, and reference point system that can be tailored to the needs of any application. All alignments are intuitive and powerful so you can easily get the alignment you need from small size parts to large area jobs.



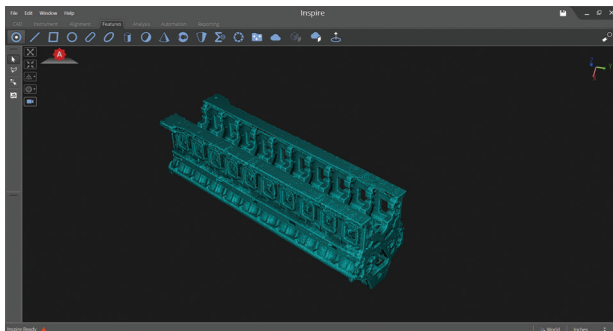
Reporting

Full featured reporting to present a basic tabular report and customised report images.



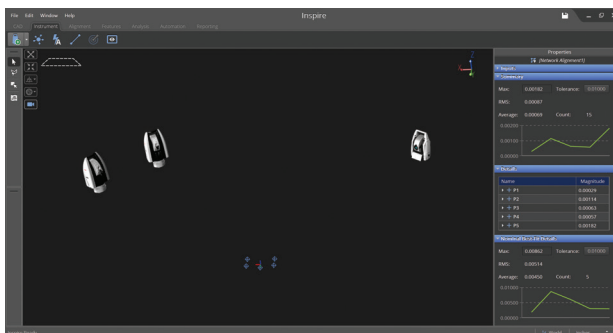
Meshing

Real-time meshing of scan data as well as the ability to produce and refine finished mesh surfaces.



Instrument network

Easily align and bundle your instrument network.



Automated inspection routines

Create robust inspection templates with predefined measurement settings, alignments, reporting elements, and more.



Assembly / build

Use Inspire not just for inspection but also for fixture setting and building applications.

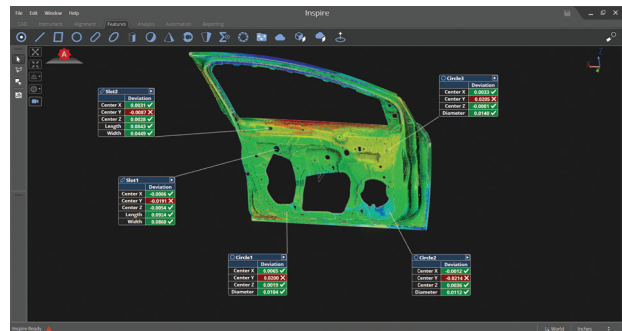


Analysis

Create comparisons between any type of objects to show deviations and optimise alignments for a virtual fit-up.

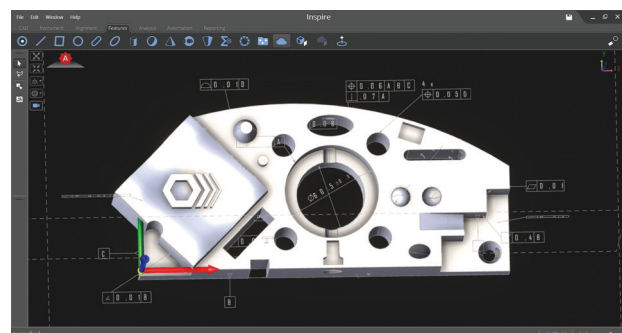
Scanning and probing

Use discrete point probing data and scanned cloud data in virtually the same manner. Inspire is designed to work with both types of data in the same way so that you don't have to treat the data sets differently.



GD&T

Address ASME standard GD&T requirements with support for native CAD annotations.



CAD import

Inspire includes the ability to import native CAD formats such as CATIA, Solidworks, NX, and others!